



# Tm2GQ Overvoltage and Under-voltage Auto-reclosure Accessory

## 1. Product Overview

Picture		
Specifications	Tm2GQ/2P	Tm2GQ/4P
Adaptation	NDB2-63/2P NDB2T-63/2P NDB2LE-63/2P	NDB2-63/4P NDB2T-63/4P NDB2LE-63/4P

<b>Tm</b>	<b>2</b>	<b>GQ / □</b>	
<b>1</b>	<b>2</b>	<b>3</b>	<b>4</b>
Serial No.	Description of serial number	Code explanation	
1	Product code	Remote control	
2	Design serial No.	2	
3	Product code	Overvoltage and under-voltage protection	
4	Number of poles	2、4	

## 2. Scope of Application

- ◆ NDB2-63, NDB2Z-63, NDB2T-63, NDB2LE-63 series product accessories
- ◆ Mainly applicable to low-voltage power distribution lines for household and similar uses with AC rated frequency of 50/60Hz and rated voltage of 230V and 400V (the voltage relative to neutral line is 230V)

### 3. Application Scope

#### 3.1 Installation way

Install with TH35mm standard installation rail, tunnel type wiring terminal used for wiring

#### 3.2 Installation direction

360° installation, flexible installation direction

#### 3.3 Environmental protection requirements

Products meet the RoHS standard

#### 3.4 Altitude requirements

≤2000m

#### 3.5 Relative humidity for operation

When the temperature is above +40°C and the relative humidity of the air is not more than 50%, a higher relative humidity is allowed at a lower temperature. For example, the relative humidity can reach 90% at 20°C. Special measures should be taken to deal with occasional condensation due to temperature change

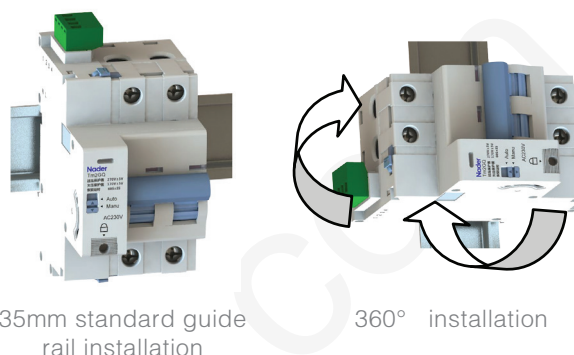
#### 3.6 Working environment

-25~+60 °C, without impact vibration or rain and snow invasion

#### 3.7 Pollution class

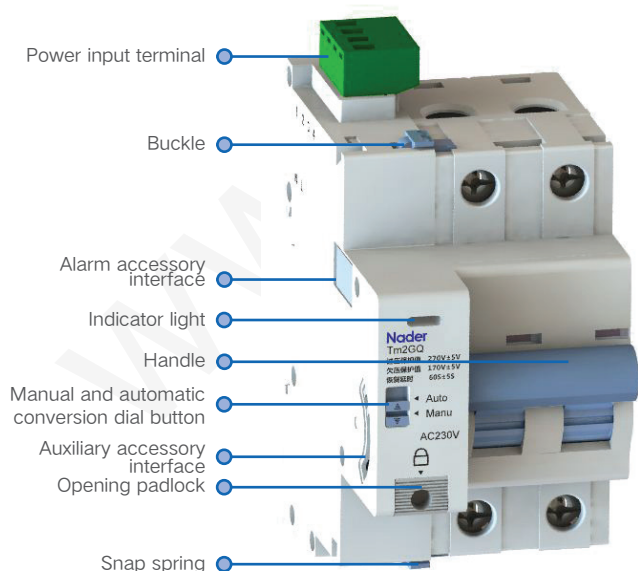
3

#### 3.8 Other extensions (Legend)



35mm standard guide rail installation

360° installation rail



Legend	
<b>Auto</b>	Automatically detect the line voltage; in case of overvoltage or under-voltage, the product will open; when the voltage returns to normal, the product will close after delay of 60s; if the product opening is due to the circuit breaker's protective tripping, the product will not automatically reclose and manual closing is required.
<b>Manu</b>	Manual opening/closing products. When line voltage anomalies appear, the product will not operate.

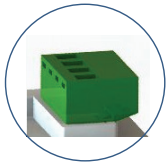


Legend	
<b>Padlock</b>	At the state of opening, it may be locked; after locking, the product will not be closed. Padlock size $\Phi \leq 4mm$ .



Legend	
<b>Alarm accessory interface</b>	Assembly model SD2
<b>Auxiliary accessory interface</b>	Assembly model OF2

Remarks:  
 1. Only after the assembly of Tm2GQ and circuit breaker body will other accessories be assembled;  
 2.The left side of Tm2GQ can be assembled with 2 SD2 or 2 OF2 or 1 SD2, 1 OF2



### Legend

#### Socket type terminal

Maximum wiring capacity of ports 1~4 is 2.5mm<sup>2</sup> (24-14AWG) and wiring capacity 0.56N·m



### Legend

#### Indicator light

Green on permanently: Normal operation, closing state  
 Red on permanently: Under-voltage fault  
 Red flash: Overvoltage fault  
 Green flash: Delayed closing  
 Orange on permanently: Fault lockout  
 Indicator light off: No power or [manual/automatic] switch is at the manual state

## 4. Technical Characteristics of the Product

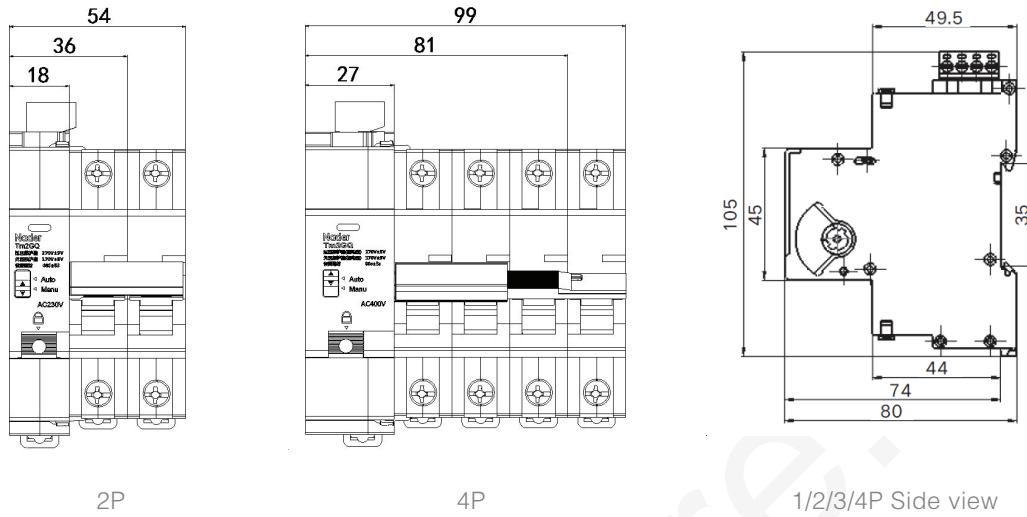
### 4.1 Purpose

- ◆ For low-voltage power distribution lines for household and similar uses with control voltages of AC230V and AC400V (the voltage relative to neutral line is 230V), it is used to automatically detect the line voltage, automatically disconnect the faulty line in case of line overvoltage and under-voltage, and automatically close when the line voltage returns to normal range to ensure the safe operation of load equipment under normal voltage
- ◆ Handle can be used to realize manual operation of circuit breaker
- ◆ Padlock accessory can be used to lock the opening of circuit breaker, thus ensuring safe operation on the site

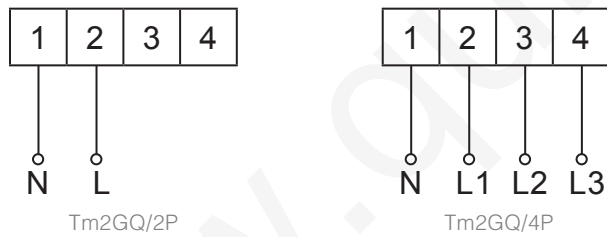
### 4.2 Technical parameters

Parameter name	Description of specific parameters	
Number of poles	2P	4P
Width (mm)	18	27
Rated voltage (V)	AC230V	AC400V
Assemblable circuit breaker model	NDB2-63/2P、NDB2T-63/2P、NDB2LE-63/2P	NDB2-63/4P、NDB2T-63/4P、NDB2LE-63/4P
Weight (g)	109	146
Rated impulse withstand voltage (kV)	4	
Under-voltage protection value (V)	170 ± 5 (phase voltage)	
Overvoltage protection value (V)	270 ± 5 (phase voltage)	
Under-voltage recovery value (V)	190 ± 5 (phase voltage)	
Overvoltage recovery value (V)	250 ± 5 (phase voltage)	
Self-recovery closing delay (s)	60 ± 5	
Closing or opening time (s)	≤0.5	
Operating life (times)	10000	
Protection grade	IP20	

## 5. Outline and Installation Dimension



## 6. Product Wiring Diagram



Note: L and N wiring cannot be reversed

## 7. Package and Storage

The existing NDB2LE-63 packaging crates, boxes and plastic bags of our company are used for packaging. Products in packaging boxes should be stored in the warehouse where air circulation and relative humidity are less than 80% and temperature is neither higher than +60°C nor lower than -25°C. And the warehouse should be free from acidic, alkaline or other corrosive gases in the ambient air. Under the above-mentioned conditions, the storage period is not more than three years from the date of production.

## 8. Matters Needing Attention

- ◆ The product must be installed by the personnel with professional qualification. The body of the product may not be disassembled without the permission of the manufacturer. Quality problems caused by unauthorized disassembly of the product should be at your own risk.
- ◆ Do not touch the product when it is powered on. Do not operate the device with wet hands to avoid any possible electric shock event.
- ◆ In case the product is at the automatic mode, it will not automatically reclose if the circuit breaker opens manually or the fault switch trips due to load, except for automatic action due to voltage fault; it is a must to manually/automatically switch the rotary knob of overvoltage and under-voltage auto-reclosure accessory to the manual mode first, and then find out the causes, eliminate the faults, close manually to reset, and manually/automatically switch the rotary knob to the automatic mode.
- ◆ During normal maintenance or troubleshooting of load side line, it is required to make sure that the overvoltage and under-voltage auto-reclosure accessory returns to the manual mode first.
- ◆ Please do not debug the product without permission. Any product quality problems incurred therefrom will not be the responsibility of the manufacturer.