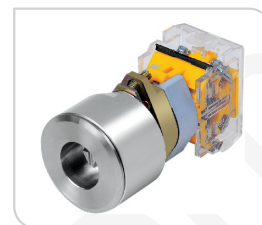


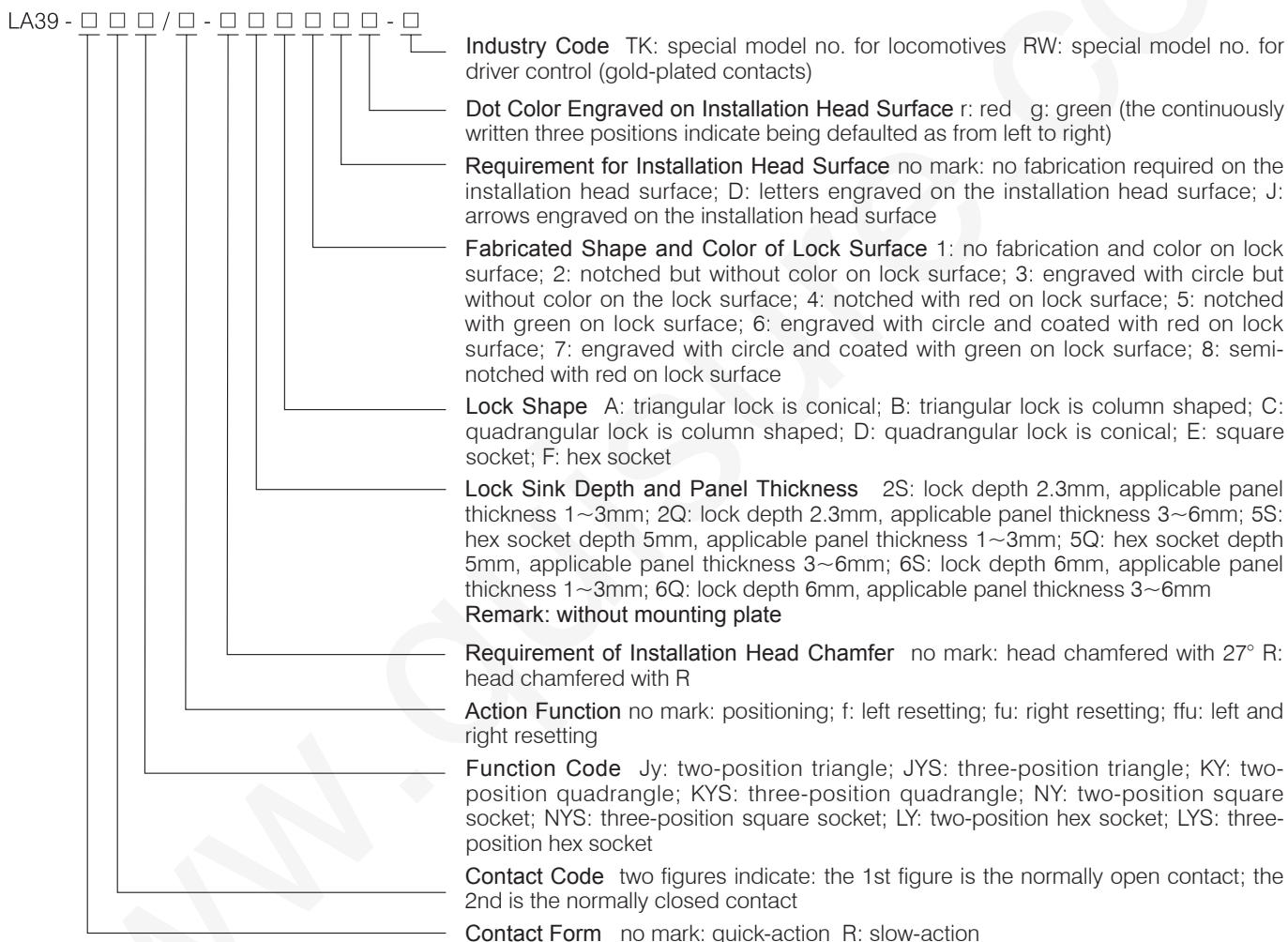
LA39 Train Triangular Key Switch Siemens APT

Triangular/Quadrangular/Square Socket/Hex Socket Key Buttons for Rail Transportation

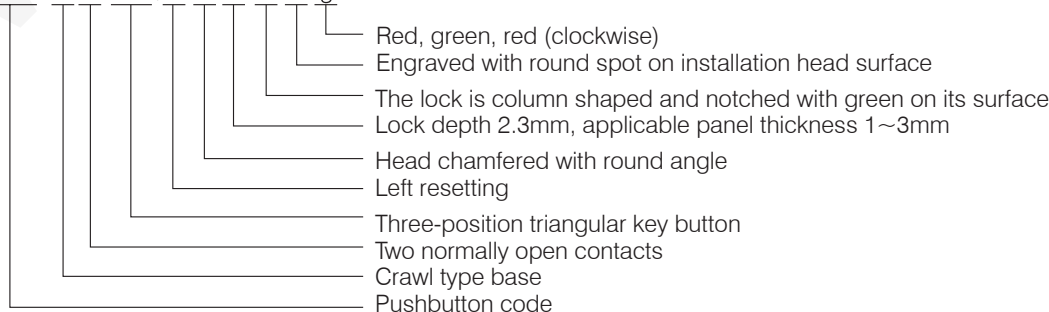
- LA39-J (K), (N) and (L) Y/series triangular/quadrangular key buttons are the high quality key switches developed by our company specially for rail transportation. The switch head and key turning part are completely made of stainless steel with good visual appearance, solid and durable. The holder part of the switch is fastened by the inclined screws special for TK series with very high vibration resistance performance. These series of products have been used in many railways.
- Head Protection Class: IP65 for positioning type and IP54 for spring-return type



Naming Rules

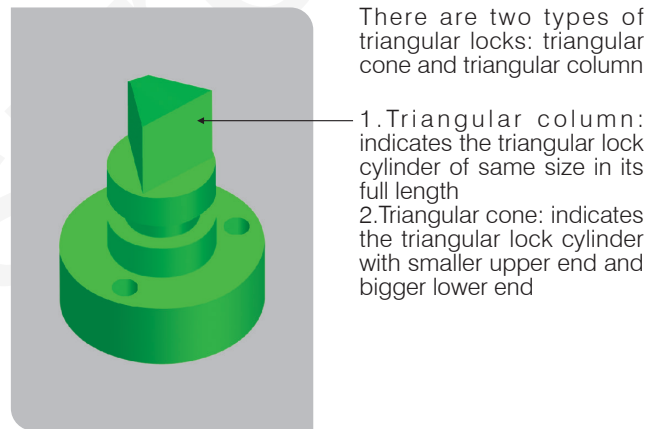
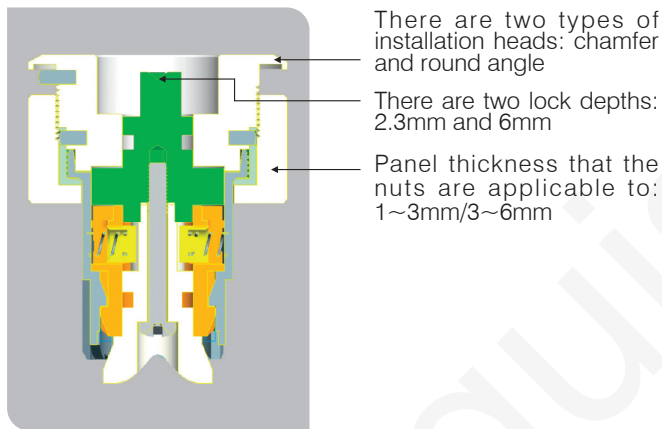
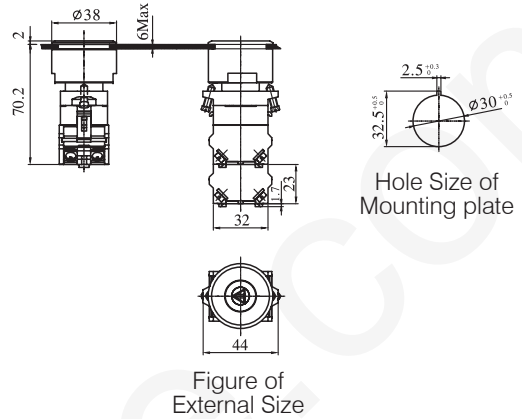
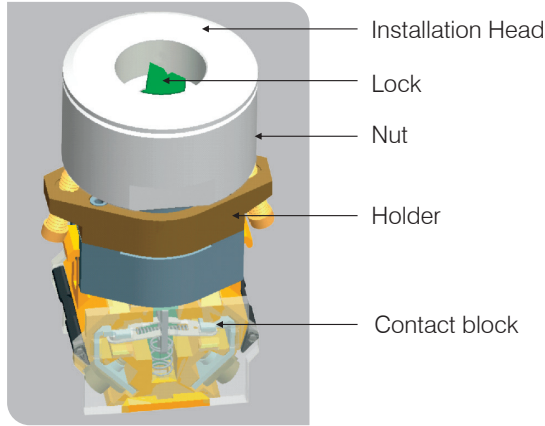


For example LA39 - R 20 JYS / f - R 2S B5 D rgr



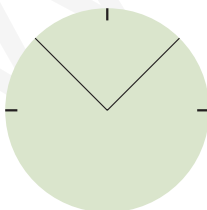
LA39 Key Switch Series

Illustration diagrammatic sketch

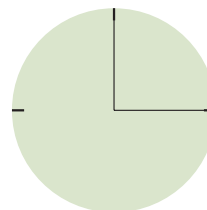


Remarks:

1. Descriptions on positioning angles of two-position triangular key button



The defaulted starting position of two-position triangular key button is 10:30-13:30. No specification is required when placing an order.



Please specify when placing an order if the starting position as shown in the figure is required: 12:00~15:00

2. For the special head shape or function, please call us by (021-56553757) for consultation or provide the drawings for fabrication.

Application projects list

Category	Project Name	Places of Application	All Products
Large Railways	Various types of rail collection train set tamping machines, screen scarifiers, ballast distributing and trimming machines, material transportation machines, rail status verification machines etc.	Built-in, car body, driver control etc.	Whole series of APT products
	Official vehicle power distribution panels, special emergency power supply boxes for air-conditioned trains, train enclosures	Enclosures of 25T, 25K series of large railway passenger trains	Whole series of APT products
	SS9 locomotive, SS8 locomotive, SS7C locomotive, SS7D locomotive, 25G, 25K, 25T (locomotives)	DC600V power supply system cabinets of locomotives	1. Cam switches, 2. Two-color lights, 3. Key buttons, 4. Maintain buttons, 5. Normal buttons, 6. Acoustic and optical separately controlled buzzers, 7. Triangular key buttons (normally used in 25 series locomotives)
	Qinghai-Tibet Railway		1. Cam switches, 2. Two-color lights
Intercity Multiple Units (Trains)	Multiple units used for 200km	Driver control station and carriage enclosures	1. Cam switches, 2. Two-color lights, 3. Quadrangular key switches
	Multiple units used for 250km	Driver control station and carriage enclosures	1. Combined indications, 2. Buzzers, 3. Triangular key switches
	Multiple units used for 300km	Driver control station and carriage enclosures	1. Combined indications, 2. Illuminated buttons
	Multiple units used for 350km	Driver control station and carriage enclosures	1. Combined indications, 2. Illuminated buttons
City Metros	Chengdu Metro Lines	Control of metro stations	Whole series of APT products
	Chongqing Rail Line 3	Control of metro stations	Whole series of APT products
	Bombay Light Rail, India	Indications of light rail trains	35 series train door indicator lights
	Changchun Light Rail	Driver control station of light rail	TK series special pushbuttons and two-color indicator lights
	City Rail Vehicle Door Control Series	Auto door locks	Triangular key buttons, quadrangular key buttons and TK series special pushbuttons
	Chongqing Rail Line 3	Driver control station of metro	Whole series of APT products
Metro Base Stations	Beijing Metro Lines 1, 4 Chengdu Metro Lines Tianjin Metro Lines Guangzhou Metro Lines 3, 4, 5	Built-in, car body and driver control etc.	1. TK series pushbuttons, 2. Lead seal series knobs and cam switches, 3. Indicator lights, 4. Buzzers, 5. RW series pushbuttons
	Shanghai Metro Lines 2, 6, 7, 8, 9, 10, 11, 13 Shenzhen Metro Line 2 Shanghai Hongqiao Transportation Hub etc.	Various communication, control and power distribution systems etc.	Whole series of APT products

Model Selection of Rail Transportation products Pushbutton, Indicator/Buzzer, Cam Switch Series

