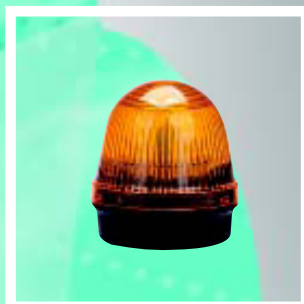




2014-2015

SIGNAL TOWER

JD36,JD50,JD70,
JD90,JD150



TAYEE

SIGNAL LAMP



APPEARANCE

The Europe traditional design style is steady and in good taste, showing originality, endowing your equipment with innervation and vitality, upgrading the appearance and function, making your products coruscate

MATERIAL

The JD-series signal lamps are covered with high-quality materials which has vivid color and good transmissivity and no fading after long time use.

DEGREE OF PROTECTION - IP65

In order to make the products widely used in every walk of life, TAYEE follows its consistent high standard during the process of design and manufacture, which makes every product's degree of protection meet IP65 and satisfy your needs.

INDIVIDUATION OPTION

More and more innovation is required in this competitive age. The JD-series signal lamps supply different kinds of appearance for you, such as JD50A, JD50CA, JD70CA, JD70A, JD90B, JD150A, JD150B which can give you individuation production.



VARIETY

The JD-series signal lamps can be divided into 50mm-JD50, 70mm-JD70, 90mm-JD90, 150mm-JD150 according to diameter and be divided into single light style and optical-audible style according to function.

Ø36mm Integrative Signal tower

PRODUCT CODE FOR SINGLE LAYER SIGNAL TOWER



JD36E1-Order type1+Order type2+Order type3+Order type4

	Optical source type		Luminescence modes		Color		Voltage graduation	
	Optical source	Order type1	Modes	Order type2	Color	Order type3	Voltage	Order type4
	LED	L	Permanent	01	Red	R	DC 24V	024
Blink*			02	Green	G			
Rotating flash*			03	Yellow	Y			
				White	W			
				Blue	S			
	Super Bright LED	H	Permanent	01	Red	R	AC 220V	122
Blink*			02	Green	G			
Rotating flash*			03	Yellow	Y			
				White	W			
				Blue	S			

Remark: DC are suitable for AC (the two are universal).Special voltage can be ordered. The color are arranged from the bottom up.

PRODUCT CODE FOR DOUBLE- LAYER SIGNAL TOWER

JD36E2-Order type1+Order type2+Order type3+Order type4+Order type5

	Optical source type		Luminescence modes		Color		Color		Voltage graduation	
	Optical source	Order type1	Modes	Order type2	Color	Order type3	Color	Order type3	Voltage	Order type4
	LED	L	Permanent	01	Red	R	Red	R	DC 24V	024
Blink*			02	Green	G	Green	G			
Rotating flash*			03	Yellow	Y	Yellow	Y			
				White	W	White	W			
				Blue	S	Blue	S			
	Super Bright LED	H	Permanent	01	Red	R	Red	R	AC 220V	122
Blink*			02	Green	G	Green	G			
Rotating flash*			03	Yellow	Y	Yellow	Y			
				White	W	White	W			
				Blue	S	Blue	S			



Remark: DC are suitable for AC (the two are universal).Special voltage can be ordered. The color are arranged from the bottom up.

The product with the mark of "*" can not be provided for the moment

TAYE

PRODUCT CODE FOR THREE-LAYER SIGNAL


JD36E3-Order type1+Order type2+Order type3+Order type4+Order type5+Order type6

	Optical source type		Luminescence modes		Color		Color		Color		Voltage graduation	
	Optical source	Order type1	Modes	Order type2	Color	Order type3	Color	Order type4	Color	Order type5	Voltage	Order type6
	LED	L	Permanent	01	Red	R	Red	R	Red	R	DC 24V	024
Blink			02	Green	G	Green	G	Green	G			
Rotating flash			03	Yellow	Y	Yellow	Y	Yellow	Y			
				White	W	White	W	White	W			
			Blue	S	Blue	S	Blue	S	Blue	S		
	Super Bright LED	H	Permanent	01	Red	R	Red	R	Red	R	AC 220V	122
Blink			02	Green	G	Green	G	Green	G			
Rotating flash			03	Yellow	Y	Yellow	Y	Yellow	Y			
				White	W	White	W	White	W			
			Blue	S	Blue	S	Blue	S	Blue	S		

Remark: DC are suitable for AC (the two are universal).Special voltage can be ordered. The color are arranged from the bottom up. The product with the mark of "*" can not be provided for the moment

PRODUCT CODE FOR SIGNAL TOWER WITH SINGLE BUZZER



JD36F1-Order type1+Order type2+Order type3+Order type4+Order type5

	Sonic source type	Sound mode	Decibel	Color	Voltage
	Order type1	Order type2	Order type3	Order type4	Order type5
	Buzzer F	Continuous 01	100dB 10	Black B	DC 24V 024
		Intermittent 02			AC 220V 122

Remark: DC are suitable for AC (the two are universal).Special voltage can be ordered.

PRODUCT CODE FOR SINGLE LAYER SIGNAL TOWER+SINGLE BUZZER



JD36F2-Order type1+Order type2+Order type3+Order type4+Order type5+Order type6+Order type7+Order type8

	Optical source type	Luminescence modes	Color	Sonic source	Sound mode	Decibel	Color	Voltage graduation
	Order type1	Order type2	Order type3	Order type4	Order type5	Order type6	Order type7	Order type8
	LED L	Permanent 01 Blink' 02	Red R Green G Yellow Y White W Blue S	Buzzer F	Continuous 01 Intermittent 02	100dB 10	Black B	DC 24V 024 AC 220V 122
	Super Bright LED H	Rotating flash' 03						

Remark: DC are suitable for AC (the two are universal);Special voltage can be ordered.;The color are arranged from the bottom up; the buzzer should located on the top layer; The product with the mark of "*" can not be provided for the moment

PRODUCT CODE FOR DOUBLE-LAYER SIGNAL TOWER+SINGLE BUZZER

JD36F3-Order type1+Order type2+Order type3+Order type4+Order type5+Order type6+Order type7+Order type8+Order type9

	Optical source type	Luminescence modes	Color	Color	Audible source	Sound mode	Decibel	Color	Voltage graduation
	Order type1	Order type2	Order type3	Order type4	Order type5	Order type6	Order type7	Order type8	Order type9
	LED L	Permanent 01 Blink' 02	Red R Green G Yellow Y White W Blue S	Red R Green G Yellow Y White W Blue S	Buzzer F	Continuous 01 Intermittent 02	100dB 10	Black B	DC 24V 024 AC 220V 122
	Super Bright LED H	Rotating flash' 03							

Remark: DC are suitable for AC (the two are universal);Special voltage can be ordered.;The color are arranged from the bottom up; the buzzer should located on the top layer; The product with the mark of "*" can not be provided for the moment

TAYE

PRODUCTION TYPE

Three-layer Signal tower



→ Green+Yellow+Red
LED permanent DC24V
JD36E3-L01GYR024

→ Sidemount base
C-6

Double-layer Signal tower + single buzzer

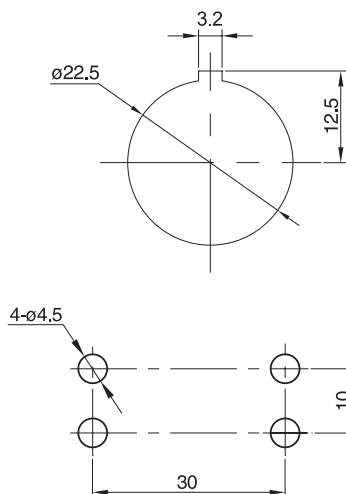


→ Green+Yellow+Buzzer
LED permanent DC24V
JD36F3-L01GYF0110B024

→ Sidemount base
C-6

Dimension drawing

Dimension drawing for mounting hole

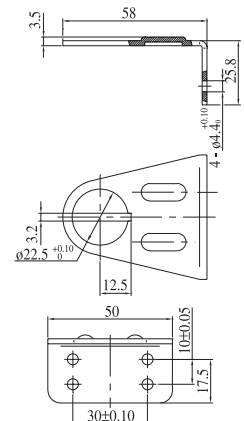


→ To install
base vertically

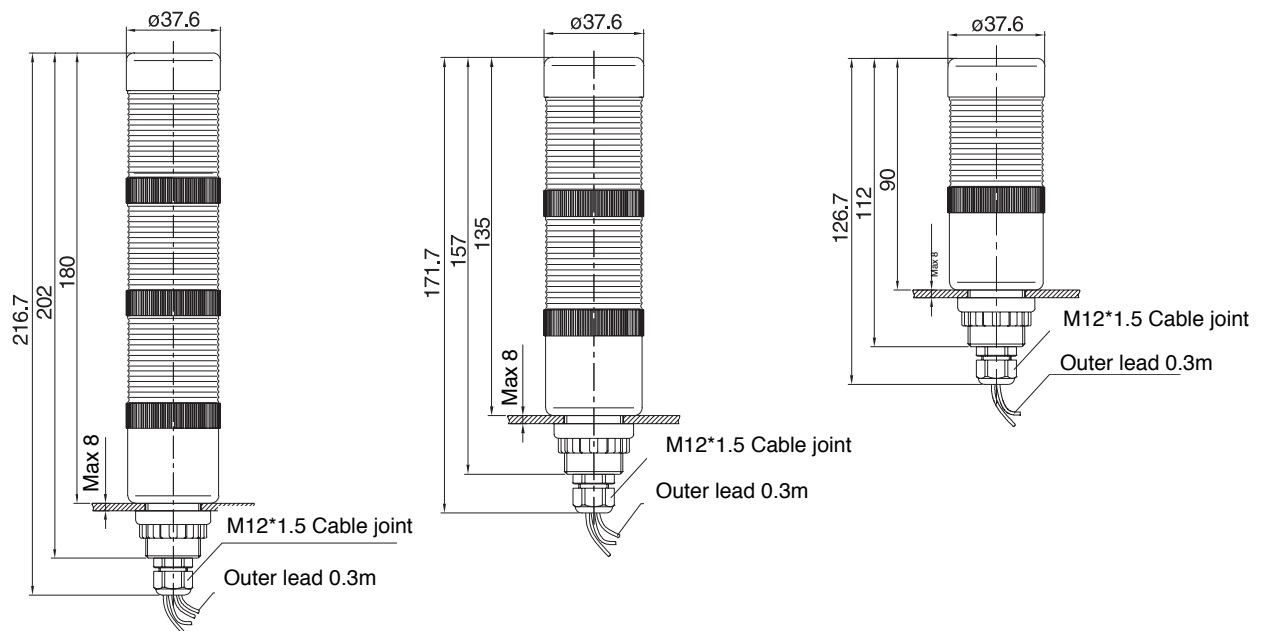
→ To sidemount base

Accessory

Sidemount base C-9



Appearance dimension



Connecting Instruction

The black wire is common, when connecting black wire with red wire, the red light is on; when connecting black wire with green wire, the green light is on; when connecting black wire with yellow wire, the yellow light is on; when connecting black wire with white wire, the white light is on; when connecting black wire with blue wire, the blue light is on; when connecting black wire with black wire, the buzzer sound